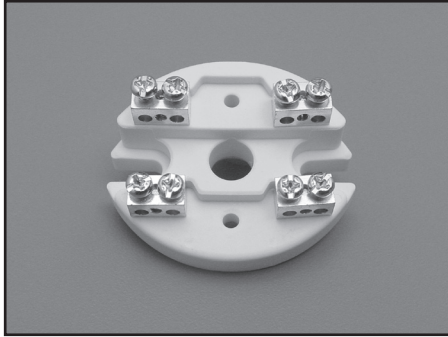


Terminal Blocks

Our ceramic terminal block fits all special purpose and general purpose heads. It is easily field configurable for single or dual sensor applications and can be used with either thermocouples or RTDs. Its ceramic base protects against elevated temperatures and the brass contacts make it easy for field wiring. The compensated block used in EHA and EHI explosion proof heads is available with thermocouple contacts.

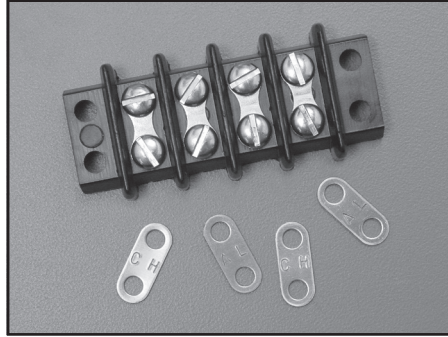
Ceramic Block



Order Codes:

TB102 - Ceramic Block - Single TC
 TB103 - Ceramic Block - Single RTD
 TB104 - Ceramic Block - Dual TC
 TB106 - Ceramic Block - Dual RTD

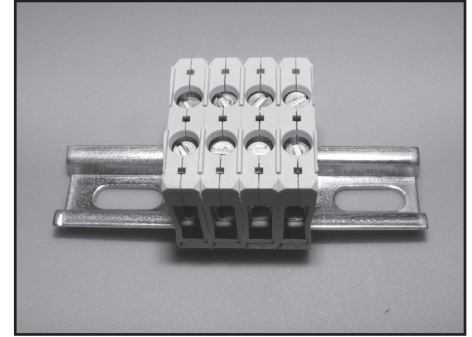
Compensated Block for EHA and EHI Heads



Block Order Codes:

TB202 - Block - Single TC
 TB203 - Block - Single RTD
 TB204 - Block - Dual TC
 TB206 - Block - Dual RTD

Compression Block for EHA, EHI, EP Series



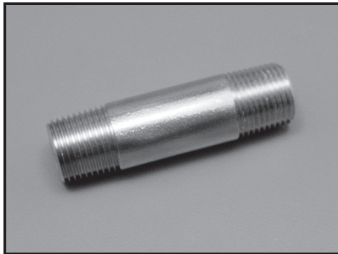
Order Codes:

CB102 - Block - Single TC
 CB103 - Block - Single RTD
 CB104 - Block - Dual TC
 CB106 - Block - Dual RTD

*Note: For thermocouple contacts insert calibration letter following block part number. This block can be used in a junction box and is available in a one piece construction with up to 20 points. To order follow the ordering sequence above. i.e. TB220-J is a single terminal block with 20 points for an Iron Constantan® thermocouple.

Extensions

Nipples and unions are constructed of galvanized carbon steel as a standard construction. Adding an S to the end of the order code gets you a corrosion resistant stainless steel extension. Standard extension size is 1/2" NPT.

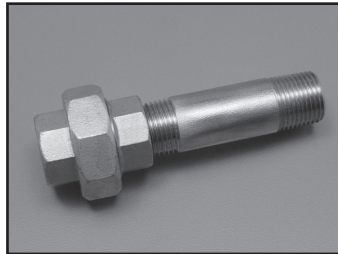


Order Codes:

N Nipple
 NS Nipple - Stainless Steel

Length:

1" Minimum

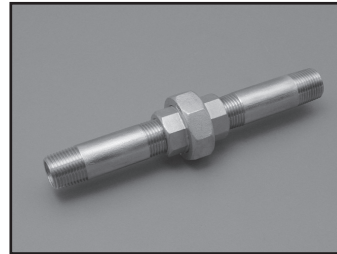


Order Codes:

NU Nipple/Union
 NUS Nipple/Union - Stainless Steel

Length:

2" Minimum

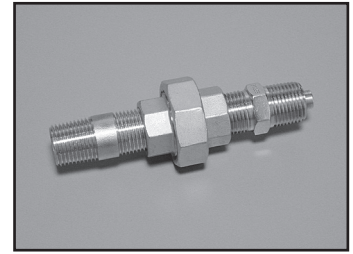


Order Codes:

NUN Nipple/Union/Nipple
 NUNS Nipple/Union/Nipple - Stainless Steel
 PNUN Pressure Seal in Union - Galvanized
 PNUNS Pressure Seal in Union - Stainless Steel

Length:

3" Minimum



Order Codes:

HUNS Hex Nipple/Union/
 Nipple Stainless Steel

Length:

3" Minimum