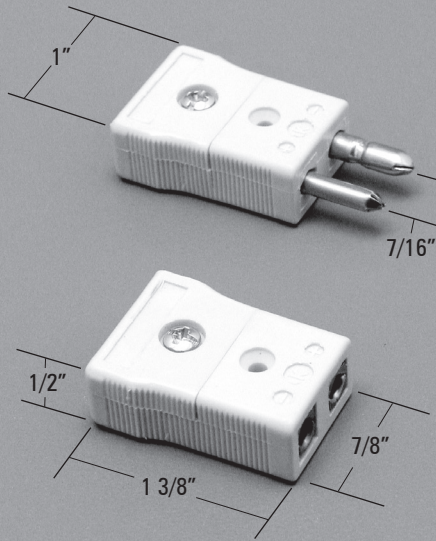


Assembly Termination Code: 2



Assembly Termination Code: 5

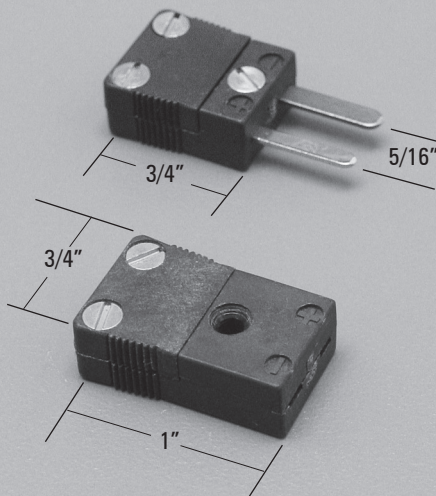
**Thermocouple Connector - Two Pole**

- Glass filled thermoplastic body provides high strength at temperatures up to 425°F 218°C) as well as low moisture absorption and good dielectric constant .
- Heavy duty hollow pin construction prevents reverse mating of polarity.\*
- Body color coded to ISA and ANSI standards.
- Polarity indicated by symbols molded into body.
- Contacts made of thermocouple materials which meet ISA and ANSI standards .
- Jack spring loaded to insure firm grip to plug.
- Accepts wire sizes to 14 awg.
- Single screw cover cap for fast assembly.
- Accepts crimp and tube adapter for product from .020 to .375.
- Finger grips to permit ease of connection.
- Quick wiring hook up with large head screws and wire channel.

Catalog Number	Plugs	Jacks	Thermocouple Type	Body Color	Actual Alloy + In Connector	-
LP-J		L J-J	Iron-Constantan®	Black	Iron	Constantan®
LP-K		L J-K	Chromel®-Alumel®	Yellow	Chromel®	Alumel®
LP-E		L J-E	Chromel®-Constantan®	Violet	Chromel®	Constantan®
LP-T		L J-T	Copper-Constantan®	Blue	Copper	Constantan®
LP-R/S		L J-R/S	Platinum/Rhodium-Platinum	Green	Copper	#11 Alloy
LP-CU		L J-CU	Uncompensated	White	Copper	Copper

\*Solid pin available on above construction. Add S to Part No. (i.e. LPS-J)

Assembly Termination Code: 3

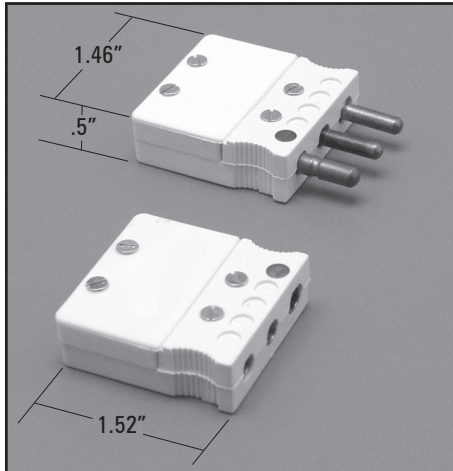


Assembly Termination Code: 6

**Miniature Thermocouple Connector**

- Thermoplastic body provides high strength at temperatures up to 425°F (218°C) as well as low moisture absorption and good dielectric constant .
- Small, light weight and space saving.
- Body color coded to ISA and ANSI standards.
- Polarity indicated by symbols molded into body.
- Contacts made of thermocouple materials which meet ISA and ANSI standards .
- Jack spring loaded to insure firm grip to plug.
- Accepts crimp adapter for product from .020 to .125.
- Finger grips to permit ease of connection.
- .10" I.D. center mounting hole.

Catalog Number	Plugs	Jacks	Thermocouple Type	Body Color	Actual Alloy + In Connector	-
M P-J		M J - J	Iron-Constantan®	Black	Iron	Constantan®
M P- K		M J - K	Chromel®-Alumel®	Yellow	Chromel®	Alumel®
M P- E		M J - E	Chromel®-Constantan®	Violet	Chromel®	Constantan®
M P-T		M J -T	Copper-Constantan®	Blue	Copper	Constantan®
M P- R / S		M J -R / S	Platinum/Rhodium-Platinum	Green	Copper	#11 Alloy
M P- C U		M J -C U	Uncompensated	White	Copper	Copper



**Three Pin Plugs and Jacks**

- Body color coded to ISA and ANSI standards.
- Polarity marked.
- Negative lead clearly indicated with red disk.
- Knurled finger grip.
- Shatterproof plastic
- Temperature rating of 300°F

Catalog Number	Plugs	Jacks	Thermocouple Type	Body Color	Actual Alloy + In Connector -	Ground
TPP-J		TPJ-J	Iron-Constantan®	Black	Iron Constantan®	Copper
TPP-K		TPJ-K	Chromel®-Alumel®	Yellow	Chromel® Alumel®	Copper
TPP-E		TPJ-E	Chromel®-Constantan®	Violet	Chromel® Constantan®	Copper
TPP-T		TPJ-T	Copper-Constantan®	Blue	Copper Constantan®	Copper
TPP-CU		TPJ-CU	Uncompensated	White	Copper Copper	Copper

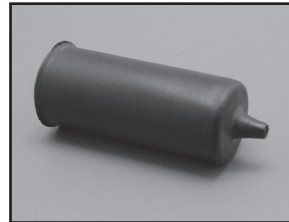
**Accessories**



**Thermocouple Alloy Spade Lugs**

Sold in bags of 25 each conductor.

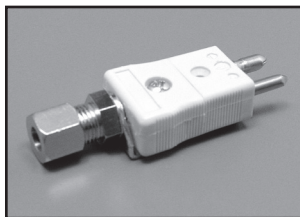
Ordering code: SL - \_\_\_\_\_  
(thermocouple calibration)  
Example: SL-K



**Weather Proof Jackets**

Neoprene rubber jackets adds moisture protection to connection. Two per assembly.

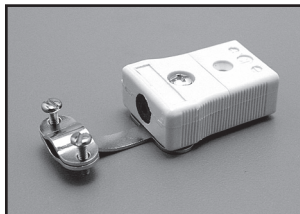
Ordering code: WPJ



**L Bracket**

For installing single metal sheath thermocouple to connector. Mounts to underside of connector for ease of wiring connections. Two screws provided for easy attachment to thermocouples.

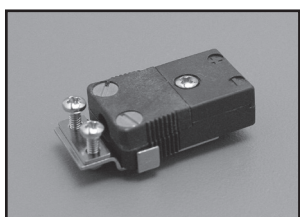
Ordering code: LB - \_\_\_\_\_  
(Sheath OD) Example: LB-1/8"



**Wire Clamp Bracket**

Rugged bracket for strain relieving insulated wires. Easily installed after wires are attached to connector.

Ordering code: WC



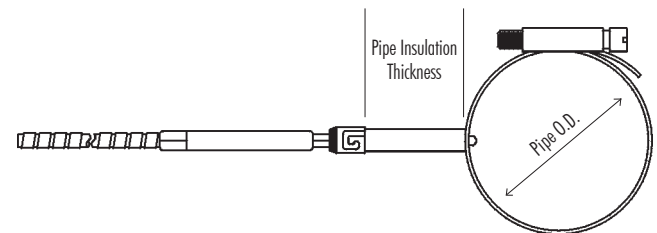
**Miniature Wire Clamp Bracket**

Smaller version of wire clamp bracket (above). Easily installed after wires are attached to connector.

Ordering code: MWC

**Pipe Clamp Adapter**

Used to measure any cylindrical surface up to 36". Type PC accepts any 1100 or 1200 thermocouple with either a fixed BF or adjustable BA bayonet adapter. Be sure to add insulation thickness, if any, to overall length of thermocouple.



To order, indicate the following:

